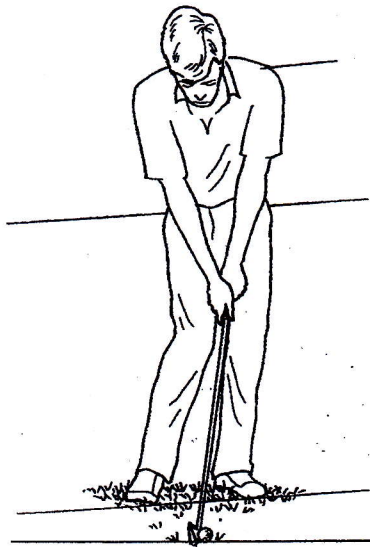


# CHIPPING

(\*indicates change from the basic full swing technique)



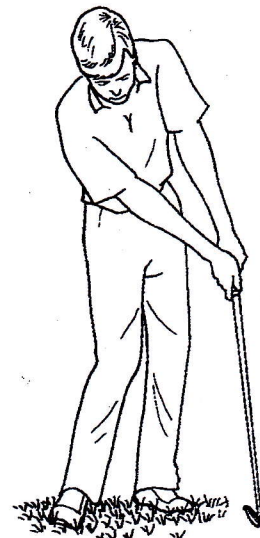
a

1. Neutral grip (V's pointing to rear of chin)
  - \*Rear wrist bent \_\_\_\_\_
  - \*Target wrist straight \_\_\_\_\_
- \*2. Stance narrower than shoulder width \_\_\_\_\_
- \*3. Feet aligned open to target line \_\_\_\_\_
- \*4. Hips aligned open relative to target line \_\_\_\_\_
5. Shoulders aligned square relative to target line \_\_\_\_\_
- \*6. Weight on target side
  - Head to target side of ball \_\_\_\_\_
  - Swing center to target side of ball \_\_\_\_\_
  - Hands to target side of ball \_\_\_\_\_
7. Posture over ball, with flat back \_\_\_\_\_
8. Weight forward, midstep to balls of feet \_\_\_\_\_
9. Center ball position \_\_\_\_\_
- \*10. Square blade, \*delofted \_\_\_\_\_



b

- \*1. Shoulders, arms, hands, club start as unit \_\_\_\_\_
- \*2. No weight shift on backswing \_\_\_\_\_
- \*3. No wrist cock
  - \*Rear wrist bent \_\_\_\_\_
  - \*Target wrist straight \_\_\_\_\_
4. Hips turn to rear \_\_\_\_\_
5. Half-turn back (back to target) \_\_\_\_\_
- \*6. Backswing length 1 or 2 \_\_\_\_\_
- \*7. No weight shift on forwardswing \_\_\_\_\_
- \*8. Shoulders, arms, hands, club move as unit \_\_\_\_\_
- \*9. Maintain unitary arm action \_\_\_\_\_
- \*10. Unit at contact \_\_\_\_\_
- \*11. Hips turn halfway to target \_\_\_\_\_



c

1. Weight on target side (rear knee touches target) \_\_\_\_\_
2. Hips face target \_\_\_\_\_
- \*3. Half-turn of chest \_\_\_\_\_
- \*4. Forwardswing length equals backswing (1 or 2) \_\_\_\_\_
- \*5. Blade square in relation to target line \_\_\_\_\_
6. Hold end position to check for balance \_\_\_\_\_
7. Wrist position
  - \*Rear wrist bent \_\_\_\_\_
  - \*Target wrist straight \_\_\_\_\_